

Southern Belle

Summer 2024 : Travel Plan

Note: All travel days and locations will be weather dependent

Date	AM Anchorage	Depart	Travel time to next anchorage @ 8 knots UNO	PM Anchorage	Optional Anchorage	Rapids*	Southern Belle Crew	Comments
Gulf Islands Travel Plan								
23-Jun-24	BYC	0800	1hr - 45 mins @ 15 knots	Silva Bay			2	Move Day 2hrs 10 mins at 12 knots
24-Jun-24	Silva Bay			Silva Bay			2	
25-Jun-24	Silva Bay			Silva Bay			2	
26-Jun-24	Silva Bay	pre 1200	1 Hr	Lady Smith/Clam Bay/ Telegraph Harbour			2	Move Day Travel through Gabriola Passage
Gabriola Passage Currents for the 26th				Max Flood	2:54a	2.7		
				Slack FI to Ebb	7:27a			
				Max Ebb	10:51a	5.3		
				Slack Ebb to FI	2:08p			
				Max Ebb	5:28pm	6.8		
27-Jun-24	Lady Smith			Lady Smith			2	
28-Jun-24	Lady Smith	Pre 1200	1 Hr	BEC Marina	Gov't Dock.		2	Move Day BEC Marina is a BYC Outstation. Non BYC Members will have to stay at the Gov't. Dock nearby.
29-Jun-24	BEC Marina			BEC Marina			2	
30-Jun-24	BEC Marina			BEC Marina			2	
01-Jul-24	BEC Marina			BEC Marina			2	
02-Jul-24	BEC Marina		1 Hr	Cowichan Bay			2	Move Day Note may have to stay another day at BEC if we can't get out. Gov't Dock at Cowichan Bay First Come First Serve best to get there early.
03-Jul-24	Cowichan Bay		1Hr 30mins	Brentwood Bay	Todd Inlet or Butchart Garden		2	Move Day Brentwood Bay, Todd Inlet or Butchart Gardens, if planning to do the gardens, Must book ahead for mooring Buoy at Butchart
04-Jul-24	Brentwood Bay			Brentwood Bay			2	
05-Jul-24	Brentwood Bay	1200	30 mins	Salt Spring Island	Telegraph Harbor or Montague Harbor		2	Move Day Reciprical Saltspring Island Yacht Club, Alternate is Montague on mooring buoy

Summer 2024 : Travel Plan

Note: All travel days and locations will be weather dependent

Date	AM Anchorage	Depart	Travel time to next anchorage @ 8 knots UNO	PM Anchorage	Optional Anchorage	Rapids*	Southern Belle Crew	Comments
06-Jul-24	Salt Spring Island			Salt Spring Island			2	Saltspring Market is on Saturday, alternate Destination is Clam Bay or Telegraph Harbour 2 Hr 35 min travel
07-Jul-24	Salt Spring Island			Salt Spring Island			2	
08-Jul-24	Salt Spring Island	0900	3 Hr 30 mins	New Castle	Telegraph Harbor		2	Move Day Alternate is from Telegraph, Travel through Dodds Narrows. Also can do reciprocal at Nanaimo Yacht Club
Dodds Narrows Currents for the 8th				Max F	2:54a	2.7		
				Slack F to E	7.27a			
				Max Ebb	10.51a	5.3		
				Slack Ebb to FI	2:08p			
				Max Ebb	5:28pm	6.8		
09-Jul-24	New Castle			New Castle				

Note: the following travel days are dependent on weather to cross the straight. Fairwinds Marina may not be the destination.

We may consider travelling straight north to Comox instead.

Desolation Sound Travel Plan

10-Jul-24	New Castle	1000	1Hr 30 min at 8 Knts	Fairwinds Marina			2	Move Day Just past Nanoose Bay
11-Jul-24	Fairwinds Marina	1000	2Hrs at 8 knots, 1 hr at 15 knots	Secret Cove			2	Move Day
12-Jul-24	Secret Cove			Secret Cove			2	
13-Jul-24	Secret Cove	1100	1Hr 20 mins	Pender Harbor Outstation (PHO)			2	Move Day PHO is a BYC Outstation. Non BYC Members will have to stay nearby or anchor.
14-Jul-24	Pender Harbor Outstation			Pender Harbor Outstation	Ballet Bay or Maude Bay		2	
16-Jul-24	Pender Harbor Outstation			Pender Harbor Outstation	Ballet Bay or Maude Bay		2	
17-Jul-24	Pender Harbor Outstation	0900	4Hrs 38mins (2Hrs 20 mins at 16kts)	Lund	Alt Squirrel Cove add 1.5 hrs		2	Move Day If wind is down travel to Lund can delay a day or 2 if not. Fuel, Laundry and Dinner.
18-Jul-24	Lund	0900	4Hrs	Big Bay	Alt Squirrel Cove, 1.5 hrs	Arrive at Yaculta at 8:15a or 3:50p	2	Move Day May be advisable to leave from Squirrel . Arrive in Lund before Noon

Summer 2024 : Travel Plan

Note: All travel days and locations will be weather dependent

Date	AM Anchorage	Depart	Travel time to next anchorage @ 8 knots UNO	PM Anchorage	Optional Anchorage	Rapids*	Southern Belle Crew	Comments
19-Jul-24	Big Bay			Big Bay	Alt squirrel Cove to Von Donop, 2 hrs		2	
20-Jul-24	Big Bay			Big Bay			2	
21-Jul-24	Big Bay	900	2.5Hrs	Handfield (Blind Channel)		Gillard 11:06 Slack to Flood, Blind Channel 11:32	2	Move Day need to check currents further to determine departure and arrival for Blind Channel
22-Jul-24	Hand Field Bay or Lagoon Cove off Thurston Bay			Hand Field			2	if going to Blind Channel stay 2 nights then 2 nights at Handfield or move Octopus Island departure to July 25
23-Jul-24	Hand Field			Hand Field			2	
24-Jul-24	Handfield	1030 to 1100	2Hrs	Octopus Islands		Okisollo Channel: 1:13pm	2	Move Day Need to check currents to determine departure time
25-Jul-24	Octopus Islands			Octopus Islands			2	
26-Jul-24	Octopus Islands			Octopus Islands			2	Need to check currents to determine departure time
27-Jul-24	Octopus Islands	900	2Hrs 10mins	Evans Bay		Hole in the wall: 10:13a turn to ebb	2	Move Day, Can also travel through Surge Narrows depending on distance to destination
28-Jul-24	Evans Bay			Evans Bay			2	
29-Jul-24	Evans Bay			Evans Bay			2	Need to check currents to determine departure time
30-Jul-24	Evans Bay	0900	2Hrs 50mins	Prideaux Haven	Tenedos Bay		2	Move Day
31-Jul-24	Prideaux Haven			Prideaux Haven	"		2	
01-Aug-24	Prideaux Haven			Prideaux Haven			2	
02-Aug-24	Prideaux Haven						2	
03-Aug-24	Prideaux Haven	1000	1Hr 20mins	Squirrel Cove			4	Move Day Squirrel Cove via Lund if picking up guests, may stay overnight in Lund, add extra day to Squirrel Cove take one off Von Donop
04-Aug-24	Squirrel Cove			Squirrel Cove			4	
05-Aug-24	Squirrel Cove	1000	2Hrs	Von Donop Inlet			4	Move Day
06-Aug-24	Von Donop Inlet			Von Donop Inlet			4	
07-Aug-24	Von Donop Inlet			Von Donop Inlet			4	
08-Aug-24	Von Donop Inlet			Von Donop Inlet			4	

Summer 2024 : Travel Plan

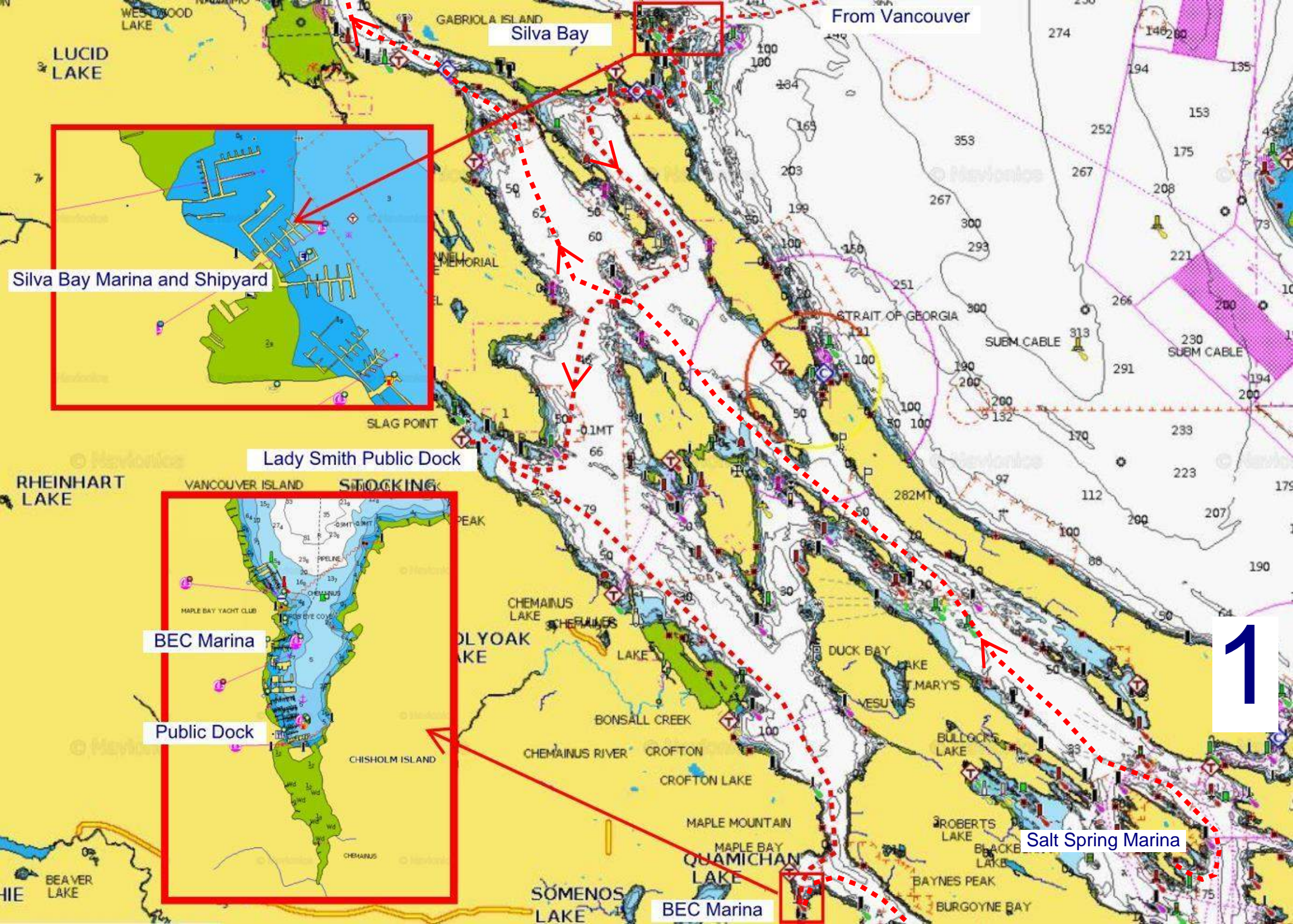
Note: All travel days and locations will be weather dependent

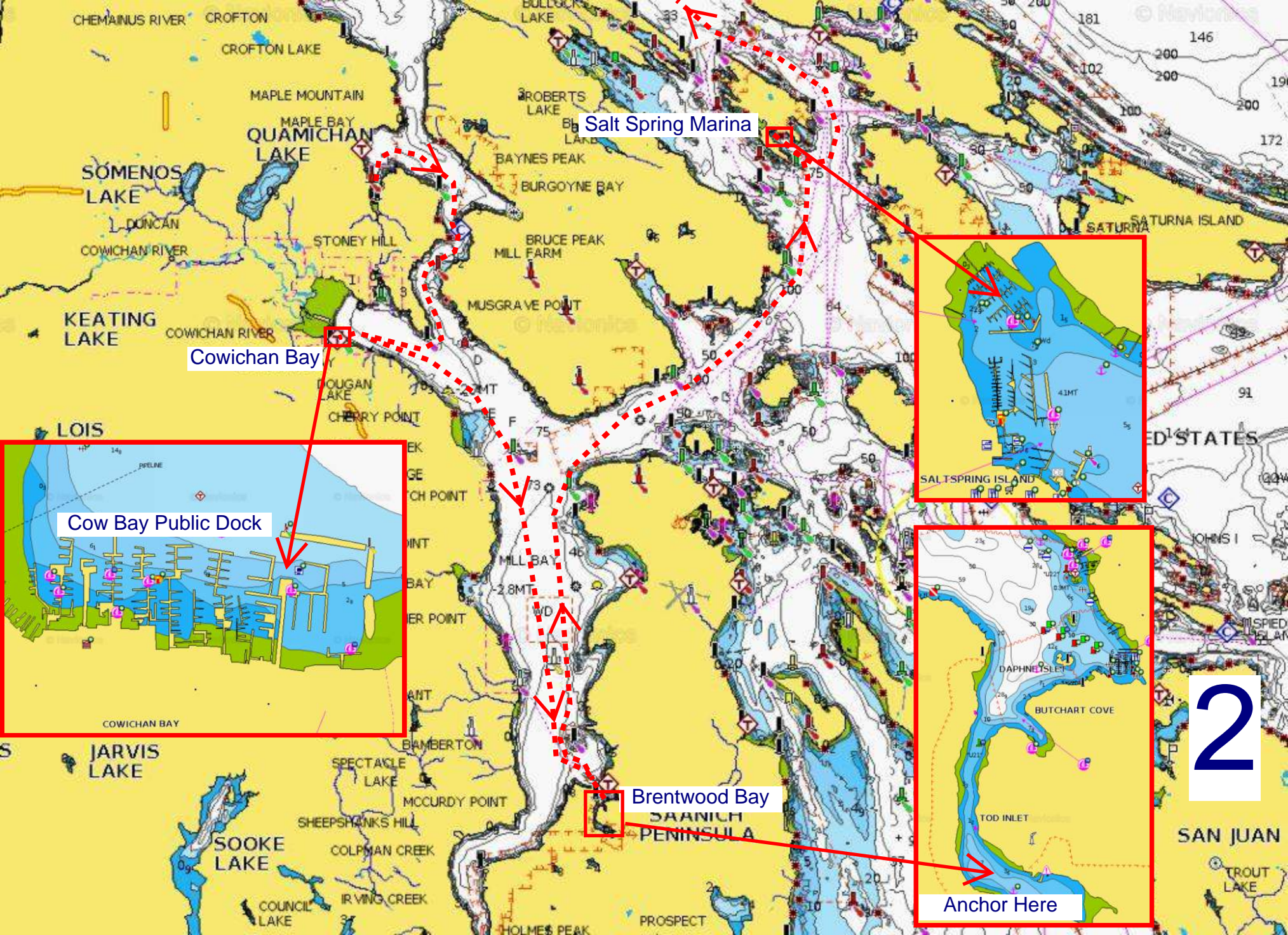
Date	AM Anchorage	Depart	Travel time to next anchorage @ 8 knots UNO	PM Anchorage	Optional Anchorage	Rapids*	Southern Belle Crew	Comments
09-Aug-24	Von Donop Inlet	0900	3Hrs 10mins	Lund			4	Move Day Laundry, Shopping & Dinner. Arrive in Lund before Noon
10-Aug-24	Lund	1000	1Hr 40mins	Roscoe Bay		High Tide 10.32a	2	Move Day
11-Aug-24	Roscoe Bay*			Roscoe Bay*			2	New anchorage for us, need to check tides to get in and out here. Could switch and do Isabel Bay, Tenedos and Roscoe Bay depending on Tide Heights
12-Aug-24	Roscoe Bay			Roscoe Bay*			2	Can also to Pendril but Roscoe and Waddington are right on the channel
13-Aug-24	Roscoe Bay*	1100	40mins	Tenedos		High Tide 3:17pm	2	Move Day
14-Aug-24	Tenedos			Tenedos			2	
15-Aug-24	Tenedos			Tenedos			2	
16-Aug-24	Tenedos			Tenedos			2	
17-Aug-24	Tenedos	1000	1Hr 25mins	Isabel Bay			2	Move Day
18-Aug-24	Isabel Bay			Isabel Bay			2	
19-Aug-24	Isabel Bay			Isabel Bay			2	Dinner at Laughing Oyster
20-Aug-24	Isabel Bay			Isabel Bay			2	
21-Aug-24	Isabel Bay			Isabel Bay			2	
22-Aug-24	Lund	1000	1Hr 35mins	Powell River			2	Move Day Laundry Shopping Dinner
23-Aug-24	Powell River	1000	1Hr 45mins	Ballet Bay			2	Move Day
24-Aug-24	Ballet Bay			Ballet Bay			2	
25-Aug-24	Ballet Bay	0900	2Hrs 25mins	Back Eddy Resort			2	Move Day
26-Aug-24	Back Eddy Resort			Back Eddy Resort			2	
27-Aug-24	Back Eddy Resort	1100	1Hr 55mins	Pender Harbour Outstation (PHO)			2	Move Day PHO is a BYC Outstation. Non BYC Members will have to stay nearby or anchor.
28-Aug-24	Pender Harbour Outstation			Pender Harbour Outstation			2	
29-Aug-24	Pender Harbour Outstation			Pender Harbour Outstation			2	

Summer 2024 : Travel Plan

Note: All travel days and locations will be weather dependent

Date	AM Anchorage	Depart	Travel time to next anchorage @ 8 knots UNO	PM Anchorage	Optional Anchorage	Rapids*	Southern Belle Crew	Comments
30-Aug-24	Pender Harbour Outstation	0900	5Hrs 9mins (2Hrs 35mins @ 16 kts)	Ekins Outstation			2	Move Day Ekins is a BYC Outstation. Non BYC Members will have to stay nearby or anchor.
31-Aug-24	Ekins Outstation			Ekins Outstation			2	
01-Sep-24	Ekins Outstation			Ekins Outstation			2	
02-Sep-24	Ekins Outstation			Ekins Outstation			2	
03-Sep-24	Ekins Outstation	1100	2Hrs 38 mins	Home			2	Move Day





Salt Spring Marina

Cowichan Bay

Cow Bay Public Dock

Brentwood Bay

Anchor Here

2

